

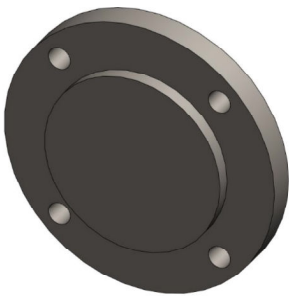


*"Providing You With Solutions"*

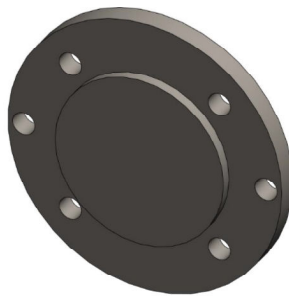
ISO 9001:2000 CERTIFIED

# PUMP BLANK-OUT PLATES

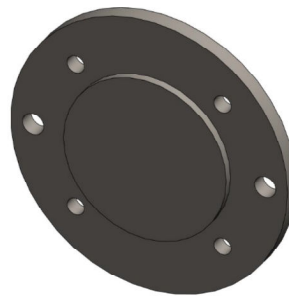
BSF Inc. can now provide standard SAE as well as custom blank-out plates. Blank-out plates are used to seal up open tandem pump ends. These plates can be manufactured with or without an o-ring groove to accommodate pumps with or without o-ring seals.



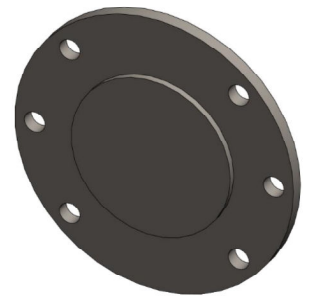
SAE "A" 2 BOLT  
NO O-RING GROOVE  
P/N: 46222-617



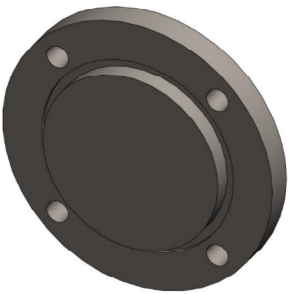
SAE "B" 2/4 BOLT  
NO O-RING GROOVE  
P/N: 46222-618



SAE "C" 2/4 BOLT  
NO O-RING GROOVE  
P/N: 46222-619



SAE "D" 2/4 BOLT  
NO O-RING GROOVE  
P/N: 46222-620



SAE "A" 2 BOLT  
WITH O-RING GROOVE  
P/N: 46222-622



SAE "B" 2/4 BOLT  
WITH O-RING GROOVE  
P/N: 46222-623



SAE "C" 2/4 BOLT  
WITH O-RING GROOVE  
P/N: 46222-624



SAE "D" 2/4 BOLT  
WITH O-RING GROOVE  
P/N: 46222-625